

# ELKAY®

## SPECIFICATIONS

### Legacy Backsplash Style Wall Mount Water Cooler Models EHFSAD & EHFSAD

#### PRODUCT SPECIFICATION

RATED FOR INDOOR USE ONLY

Self-contained, wall mount water cooler. Refrigerated EHFSAD models offer a chilling capacity of 7.6 gallons per hour of 50°F drinking water, based upon 80°F inlet water and 90°F ambient. Models EHFSAD are non-refrigerated and shall deliver non-chilled drinking water. Unit shall meet ADA guidelines. Unit shall be lead-free design which is certified to NSF/ANSI 61 and 372 and meets Federal and State low-lead requirements. Unit shall be certified to UL399 and CAN/CSA 22.2 No. 120.



#### STANDARD FEATURES

- One-piece basin with high integral backsplash
- Exclusive Flexi-Guard® Safety bubbler
- Easy to operate front and side pushbar activation
- Finish options: Impact-resistant vinyl coating or stainless steel wrapper
- Rated for Indoor Use

#### CONSTRUCTION

- Fountain Top: One piece stainless steel top, polished to a uniform Elkay satin luster finish
- Frame: Galvanized steel chassis support
- Exclusive Flexi-Guard® Safety bubbler: Innovative design utilizes an infused anti-microbial pliable polyester elastomer to prevent accidental mouth injuries. Flexes on impact, then returns to original position. Anti-sweat.
- Removable Wrapper: Offers easy accessibility to interior.

#### COOLING SYSTEM (Models EHFSAD only)

- Compressor: Hermetically-sealed, reciprocating type, single phase. Sealed-in lifetime lubrication.
- Condenser: Fan cooled, copper tube with aluminum fins. Fan motor is permanently lubricated.
- Cooling Unit: Tube type. Self-cleansing. Continuous copper tubing which is fully insulated with EPS foam that meets UL requirements for self-extinguishing material.
- Refrigerant Control: Refrigerant R134a is controlled by accurately calibrated capillary tube.
- Temperature Control: Easily accessible enclosed adjustable thermostat is factory preset. Requires no adjustment other than for altitude requirements.

**Warranty:** 5 year limited warranty on the unit's refrigeration system. Electrical components and water system are warranted for 12 months from date of installation or 18 months from factory shipment, whichever date falls first.

CAPACITIES CHART						UL US	ADA COMPLIANT	ANSI/NSF 61 and 372 Certified
Model	Voltage / Hertz	Chilling** Capacity	F.L. Amps	Rated Watts	Approx. Ship Wt.	UL399 and CAN/CSA 22.2 No. 120 Certified	ADA COMPLIANT	ANSI/NSF 61 and 372 Certified
EHFSA8*1Z	115V / 60Hz	7.6 GPH	4.00	370	70 lbs	•	•	•
EHFSA8*2ZJO	220V / 50Hz	6.3 GPH	2.00	370	70 lbs	++	•	•
EHFSA8*3ZJO	220V / 60Hz	7.6 GPH	2.00	370	70 lbs	++	•	•
EHFSAD*	No Electrical	–	–	–	39 lbs	•	•	•

\*Color code of (L) Light Gray Granite, (N) Almond, (T) Sandalwood or (S) Stainless Steel cooler wrapper.

\*\*Based on 80°F inlet water & 90°F ambient air temp for 50°F chilled drinking water.

++Complies; not third party certified.

*This specification describes an Elkay product with design, quality and functional benefits to the user. When making a comparison of other producer's offerings, be certain these features are not overlooked.*

In keeping with our policy of continuing product improvement, Elkay reserves the right to change specification without notice. Please visit [elkay.com](http://elkay.com) for the most current version.

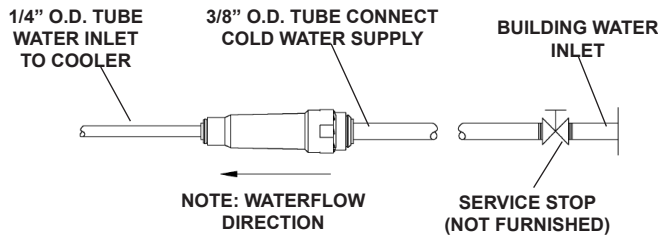
2222 Camden Court  
Oak Brook, IL 60523  
630-572-3192  
[elkay.com](http://elkay.com)

© 2014 Elkay  
SPEC12-02 (03/2014)

# Legacy Backsplash Style Wall Mount Water Cooler Models EHFSA8 & EHFSAD

# ELKAY® ROUGH-IN DIMENSIONS

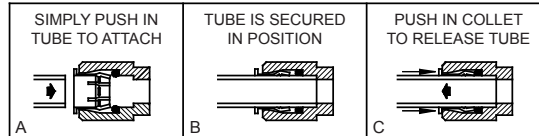
RATED FOR INDOOR USE ONLY



NOTE: WATERFLOW  
DIRECTION

SERVICE STOP  
(NOT FURNISHED)

### OPERATION OF QUICK CONNECT FITTINGS



PUSHING TUBE IN BEFORE  
PULLING IT OUT HELPS TO  
RELEASE TUBE

Open space rough-in design permits new installation or replacement of existing fountains and coolers with this Elkay cooler when rough-in is within the outline shown.

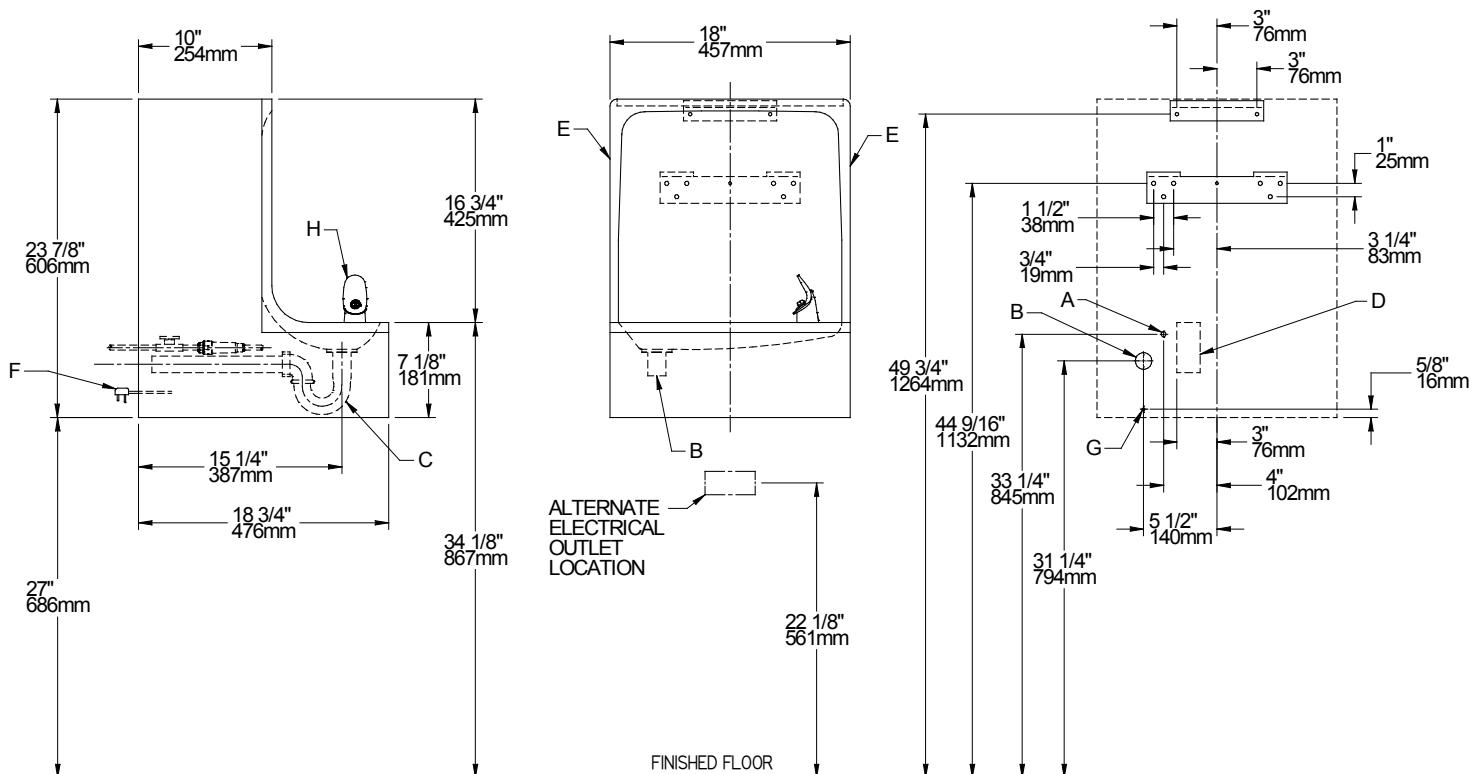
#### IMPORTANT! INSTALLER PLEASE NOTE:

This water cooler has been designed and built to provide water to the user which has not been altered by materials in the cooler waterways.

The grounding of electrical equipment such as telephone, computers, etc to water lines is a common procedure. This grounding may be in the building or occur away from the building. This grounding can cause electrical feedback into a water cooler creating an electrolysis which creates a metallic taste or causes an increase in the metal content of the water. This condition is avoidable by installing the cooler using the proper materials as shown below.

#### NOTICE

This water cooler must be connected to the water supply using a dielectric coupling. The cooler is furnished with a non-metallic strainer which meets this requirement. The drain trap, which is provided by the installer, should also be plastic to completely isolate the cooler from the building plumbing system.



REDUCE HEIGHT BY 3 INCHES FOR INSTALLATION OF CHILDRENS ADA COOLER

- A = RECOMMENDED WATER SUPPLY LOCATION. SHUT OFF VALVE (NOT FURNISHED) TO ACCEPT 3/8" O.D. UN
- B = RECOMMENDED LOCATION FOR WASTE OUTLET 1-1/4" O.D. DRAIN
- C = 1-1/4 TRAP NOT FURNISHED\*\*
- D = ELECTRICAL OUTLET LOCATION
- E = INSURE PROPER VENTILATION BY MAINTAINING 6" (152mm) (MIN.) CLEARANCE FROM CABINET LOUVERS TO
- F = POWER CORD 1-1/2 FEET (457mm) LONG
- G = THIS BOLT HOLE MUST BE USED FOR FASTENING UNIT TO WALL.
- H = ORIFICE HEIGHT 1-1/4" (32mm) ABOVE RIM

Job Name: _____	
Model: _____	Qty. _____
Contact: _____	
Approval Signature: _____	
Notes: _____	